

SKETCHBOOK ASSIGNMENTS - HS ART

3rd 9 Weeks-Q3 2014-15

You must complete the 4 assignments listed below.

- Drawings should fill the **ENTIRE** sketchbook page (points will be deducted for small drawings.)
- Include **DETAILS** (include textures & value, unless otherwise specified.)
- Spend a minimum of **30** minutes on each assignment.
- Each sketchbook assignment counts as a **QUIZ** grade!
- Sketchbooks handed in late will be accepted but 30 points removed for lateness, 2 days late will receive a "0".

Grading: Total 25 pts. Each

Size	0-5
Effort	0-10
Creativity	0-5
Label	0-5
	25 pts.



This drawing is NOT acceptable & will get very little points-not passing!



This drawing is detailed, well drawn & proportions are correct. This would receive high points.

This is what I expect your drawings to look like!

YOU MUST LABEL EACH PICTURE at the top with the appropriate title (ex: SB #1: Student Choice)

DRAWINGS NEEDS TO BE FROM DIRECT OBSERVATION ie: you **LOOKING** at the objects! *That means NOT from memory, photos, or imagination.* (except where otherwise noted). **Pay close attention to proportions (size relationships)**



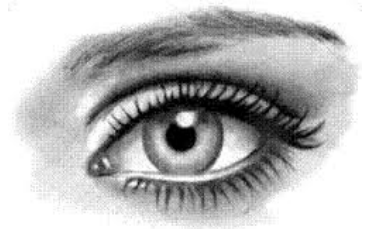
SB #9: Manga/Cartoon: DUE Fri Jan 16

Design your own original cartoon character. It can be cartoon or Manga style. It can be human or animal (or have qualities of both). Write a brief description of your character-where does it live, how old, what gender, super powers? enemies?

Medium: colored pencil or marker

SB #10: Eye Study: DUE Fri Jan 30

Find **4** different frontal views of eyes in magazines. Cut them out & glue them to your sketchbook page. Draw the eyes underneath the picture & render with a **FULL** range of shading. *Medium:* pencils or colored pencils



SB #11: Hand Study: DUE Fri Feb 13

Draw your hand holding an object. Render with **FULL** shading! Include details, textures!

Medium: Drawing Pencil,

SB #12: Theme Reference Pictures: DUE Fri Feb 27

For our next projects we will be creating 3 pieces of art based on one theme. Find 6+ pictures for you to use a reference for your artwork and glue them into your sketchbook. If the pictures on the internet, print them out & glue them in. Write down any notes on colors you want to use or additional items to include.

Medium: collage-glue, scissors